

Pattern #150 - Moose Creek



Bed Quilt
79 1/2" x 90 1/2"

Lap Quilt
52 1/2" x 63 1/2"

To quilters using this pattern: There are a few errors in this pattern. All of my patterns are checked and re-checked by quite a few people. Still, sometimes errors occur. They are highlighted in pink.





All of the errors have been fixed in all new printings of this pattern. But if you have the older version of this pattern, this is what you need to know:

I'm sorry for any inconvenience.

The first error is the actual finished size of the Bed Quilt. It should be listed as 79 1/2" x 90 1/2". This error also occurs on Page 5 and Page 10.

Page 5

1

- (6) 4" x 11 1/2" 
- (6) 2 7/8" 
- (12) 2" x 6 3/8" 
- (12) 2" x 6 3/8" 

You will also need to cut six 2 7/8" Fabric #1 squares. These squares are then cut in half diagonally, and will be used on Page 8 (Bed Quilt) in the pattern.

Page 6

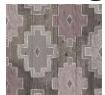
2

Binding:

- (6) 2" x 32" sew three together end to end, then trim to (2) 2" x 90 1/2"
- (6) 2" x 29" sew three together end to end, then trim to (2) 2" x 83 1/2"

Page 7

5



23863-98

Border #2 - Note that the motif is lengthwise

- (4) 5" x 42" cut lengthwise. Sew two together end to end, then trim to (2) 5" x 81 1/2"
- (8) 5" x 20" cut widthwise. Sew three together end to end, then trim to (2) 5" x 79 1/2"

Because the motif in Fabric #5 is oriented lengthwise, you will need to cut the side Border pieces lengthwise, and the top and bottom Border pieces widthwise. The numbers for the widthwise border is incorrect. The corrected measurements for the border are given in Pink

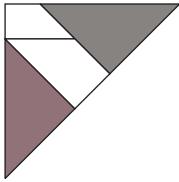
Block #2

finished size: 11" square

Make 6



Page 11



1. Sew a $1\frac{1}{2}$ " x $2\frac{7}{8}$ " Fabric #1 left hand trapezoid to the top of a 2 " x $3\frac{3}{4}$ " Fabric #1 right hand trapezoid. Press towards the smaller trapezoid.

Next, sew a $5\frac{1}{4}$ " Fabric #2 quarter square triangle to the top right hand side of this piece, and a $5\frac{1}{4}$ " Fabric #4 quarter square triangle to the bottom left hand side. Press towards each triangle. Make 12.

2. Sew a $1\frac{1}{2}$ " x $2\frac{7}{8}$ " Fabric #1 right hand trapezoid to the top of a 2 " x $3\frac{3}{4}$ " Fabric #1 left hand trapezoid. Press towards the smaller trapezoid. Make 12.

3. Sew a piece made in Step #2 to the top right and bottom left hand side of a 2 " Fabric #3 square. Press towards the square. Make 6.

